



Turn your ideas into money. If we print your application story idea, you will receive a reward. Contact Alex Orson at Monitor Technologies.
800.601.5946
aorson@monitortech.com

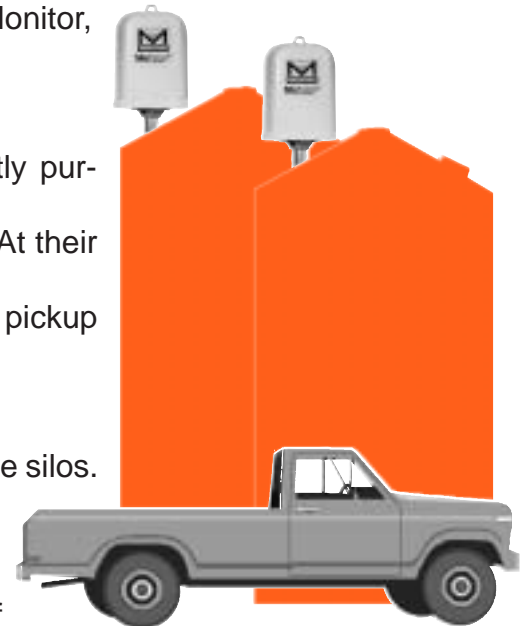


Information provided by:
Jim Stovall, Monitor Technologies LLC

When faced with failing equipment, a customer turns to Monitor, a proven problem solver.

Penda Corporation located in Portage, Wisconsin recently purchased two retro-fit SMUs for their plastic pellet application. At their facility, the plastic pellets are transformed into bed liners for pickup trucks.

For many years, Penda used Monitor's CM-3As on their five silos. While they were not experiencing serious problems with the units, a decision was made to get rid of the CMs in favor of newer technology.



Penda purchased Krohne's TDR-Radar sensors, Model BM-100A. Tom Reich, maintenance supervisor at Penda, had non-stop problems with the sensors. From the start, the sensors were only able to hold calibration for a few days.



Left without properly working sensors, Penda turned to the company and technology that had worked for them in the past, Monitor and the **SiloPatrol®** Inventory Monitoring System.▼

January/February 2002

Visit www.monitortech.com For the Latest
Product News and Information

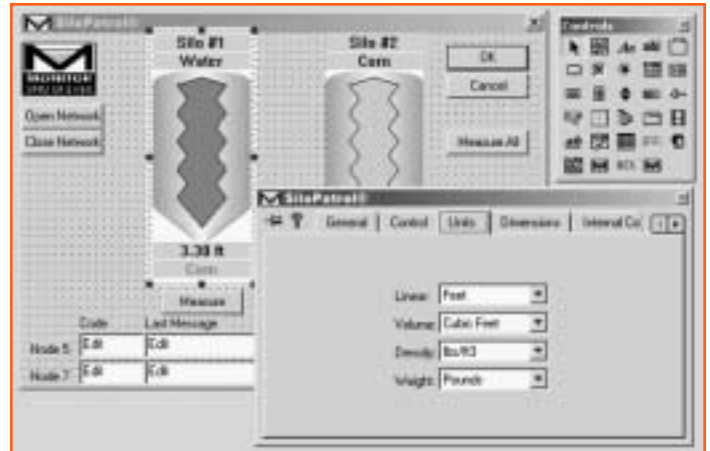
News Briefs

WITHDRAWAL FROM SALE

Effective immediately the SS-3 circular air pad is hereby no longer available for sale or shipment.

Future requirements for bin aerators will be fulfilled by applying either the Evasser or rectangular air pad products.

The withdrawal of the SS-3 circular air pad is due to a low level of sales extended over a period of time.▼



ActiveX® Design Screen

ACTIVEX® SOFTWARE INTERFACE ADDED TO **SiloPatrol**® SYSTEM

When using Monitor's ActiveX® software package, **SiloPatrol**® inventory monitors can be integrated into a PLC/PC control system, without the use of analog signals. The SMU "smart" sensor uses RS-485 multi-drop communications which, in conjunction with the use of the available ActiveX® software, significantly cuts the cost of installation by simplifying wiring and eliminating the need for analog I/O cards.

The communication driver contained within Monitor's ActiveX® software manages the message handling with the SMUs. The specific ActiveX® controls provided allow the control system designer to easily place **SiloPatrol** inventory monitoring functions directly into the system's operator interface screens and control the SMU(s). In Screen Design Mode, the available

sensor functions can be placed exactly where they are needed by "dragging and dropping" them in place.

Monitor offers two versions of the ActiveX® software package: basic and full-featured. Both packages can be used to request and read measurements and to read status and error messages. The full-featured software will further save time for control system designers by providing ActiveX® controls that will convert and calculate units of measure, construct bin icons and setup alarms.▼

ActiveX® is a registered trademark of the Microsoft Corporation.

New Price Books

**New Price Books effective
February 1, 2002 are now
available. Contact Monitor if you
have not received your copy by
February 15, 2002.**

